

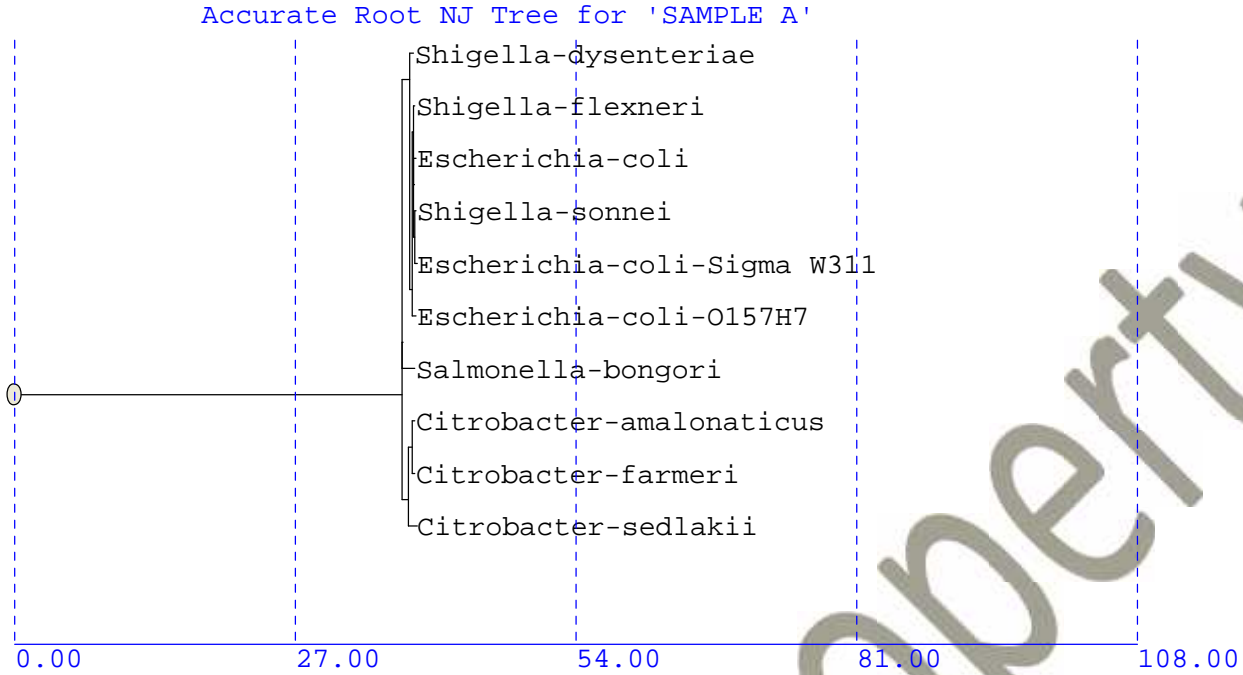
Volume: DATA File: E061011.70A Seq Counter: 9 ID Number: 1204
 Sample ID: SAMPLE A
 Matches:

Library	Sim Index	Entry Name
RTSBA6 6.21	0.735	Salmonella-enterica-enterica D
	0.619	Escherichia-coli-GC subgroup A (DNA homology with Shigella)
	0.544	Klebsiella-pneumoniae-pneumoniae-GC subgroup D
	0.521	Klebsiella-pneumoniae-pneumoniae-GC subgroup B

DNA: 1087 base pairs 9/2/2017 11:45:29 AM
 TGCAGTCGAACGGTAACAGGAAGCAGCTTGCTGCTTCGCTGACGAGTGGCGGACGGGTGAGT
 AATGTCTGGGAAACTGCCTGATGGAGGGGGATAACTACTGGAAACGGTAGCTAATACCGCAT
 AACGTCGCAAGACCAAAGAGGGGGACCTTCGGGCCCTCTTGCCATCGGATGTGCCCAGATGGG
 ATTAGCTAGTAGGTGGGGTAACGGCTCACCTAGGCGACGATCCCTAGCTGGTCTGAGAGGAT
 GACCAGCCACACTGGAAGTGGAGACACGGTCCAGACTCCTACGGGAGGCAGCAGTGGGGAATA
 TTGCACAATGGGCGCAAGCCTGATGCAGCCATGCCGCGTGTATGAAGAAGGCCTTCGGGTTG
 TAAAGTACTTTCAGCGGGGAGGAAGGGAGTAAAGTAAATACCTTTGCTCATTGACGTTACCCG
 CAGAAGAAGCACCGGCTAACTCCGTGCCAGCAGCCGCGGTAATACGGAGGGTGAAGCGTTA
 ATCGGAATTACTGGGCGTAAAGCGCACGCAGGCGGTTTGTAAAGTCAGATGTGAAATCCCCG
 GGCTCAACCTGGGAACTGCATCTGATACTGGCAAGCTTGAGTCTCGTAGAGGGGGGTAGAAT
 TCCAGGTGTAGCGGTGAAATGCGTAGAGATCTGGAGGAATACCGGTGGCGAAGGCGGCCCCC
 TGGACGAAGACTGACGCTCAGGTGCCAAAACGCTGGGGAGCAAACAGGATTAGATACCCTGGT
 AGTCCACGCCGTAAACGATGTCGACTTGGAGGTTGTGCCCTTGAGGCGTGGCTTCCGGAGCTA
 ACGCGTTAAGTCGACCGCCTGGGGGAGTACGGCCGCAAGGTTAAAACCTCAAATGAATTGACG
 GGGGGCCCGCACAAAGCGGTGGGAGCATGTGGGTTTATTTTCGATGCAACGCGGAAGAACTTTA
 CCTGGGTCTTGACATCCCACGAACTTTTCCGAAAATGAAAATGGTGCCCTTCCGGAAACCGT
 GAAAACAGGGTGCTGCCATGGGCTGGTCCGTCAGCCTCCGTGGTTGGTGAAGTGGTTAAAG
 AAGTAGGTAGCTTAACCTTCGGGAGGGCGC

MD16S2 2.21 DNA Match Report

Match	%Diff	Length	Library Entry Name
1	38.42	1537	Shigella-dysenteriae
2	38.50	1537	Citrobacter-amalonaticus
3	38.52	1537	Shigella-flexneri
4	38.53	1537	Citrobacter-farmeri
5	38.53	1536	Salmonella-bongori
6	38.62	1537	Shigella-sonnei
7	38.62	1537	Escherichia-coli
8	38.62	1537	Escherichia-coli-O157H7
9	38.69	1537	Escherichia-coli-Sigma W311
10	38.70	1537	Citrobacter-sedlakii



Cross Library Report:

DNA Library: MD16S2 FAME Library: RTSBA6

DNA Ind	%Diff	Genus	Species	FAME SI	FAME Ind
1	38.42	shigella	dysenteriae	0.357	4
2	38.50	citrobacter	amalonicus	0.074	6
3	38.52	shigella	flexneri	0.000	8
4	38.53	salmonella	bongori	0.296	5
5	38.53	citrobacter	farmeri	---	---
6	38.62	escherichia	coli	0.619	2
7	38.62	shigella	sonnei	0.008	7
8	38.70	citrobacter	sedlakii	---	---
9	38.79	salmonella	enterica	0.735	1
10	40.37	klebsiella	pneumoniae	0.544	3